

# Hand Dryers



## Ultradry® SX

Automatic 'no-touch', vandal resistant hand and face dryer for offices, shops, restaurants, pubs, clubs and hospitals.

- Cover: LM24 pressure die cast aluminium
- Finish: Epoxy/polyester powder coating
- Motor: 5,500rpm, suppressed brushed motor
- Insulation Earthed Class 1
- 264 x 275 x 177mm (H x W x D)
- Weight: 6.0kg (6.6kg packed)
- Sound level: 79 dB(A) at 1m
- Rated at: 2.4kW at 230V
- 28 second drying time
- BEAB Approved
- IP24 Rated
- Cable entry bottom right



Stock Ref

20101800SX



## Powerdry® SX

Push button operated hand and face dryer for heavy duty applications in public lavatories, factories, railway stations and schools, etc.

- Cover: LM24 pressure die cast aluminium
- Finish: Epoxy/polyester powder coating
- Motor: 5,500rpm, suppressed brushed motor
- Insulation Earthed, Class 1
- 264 x 275 x 177mm (H x W x D)
- Weight: 6.0kg (6.6kg packed)
- Sound level: 79 dB(A) at 1m
- Rated at: 2.4kW at 230V
- 28 second drying time
- BEAB Approved
- Supply voltage: 220-240V/1/50-60Hz
- IP24 Rated
- Cable entry bottom right



Stock Ref

20101600SX



## Dryline +

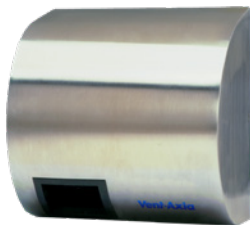
Automatic 'no-touch' operation compact hand dryer. Suitable for smaller office washrooms, kitchens and clinics.

- Cover: ABS.
- Motor: 2450rpm shaded pole induction
- Double insulated appliance
- BEAB approved
- 280 x 275 x 143mm (H x W x D)
- Weight: 2.97kg (3.3kg packed)
- Sound level: 46 dB(A) at 3m
- Rated at: 1.7kW at 230V
- 36 second drying time
- Supply voltage: 220-240V/1/50Hz
- IPX1 Rated
- Cable entry bottom right



Stock Ref

453915



## Ultradry® SX Stainless Steel

Automatic 'no-touch' hand dryer specially designed for high performance hand drying in food preparation areas and hospital applications and eminently suitable for prestige installations.

- Cover: Satin polished stainless steel
- Motor: 5,500rpm, suppressed brushed motor
- Insulation Earthed Class 1
- 264 x 275 x 177mm (H x W x D)
- Weight: 6.0kg (6.6kg packed)
- Sound level: 79 dB(A) at 1m
- Rated at: 2.4kW at 230V
- 28 second drying time
- BEAB Approved
- IP24 Rated
- Cable entry bottom right



Stock Ref

20101840SX



## Prepdry-Stainless Steel

Designed for food preparation areas and hospital applications where the highest levels of hygiene have to be observed. Automatic 'no-touch' hand dryer.

- Cover: Satin polished stainless steel
- Motor: External Rotor Brushless Motor 2700 rpm
- Insulation Earthed Class 1
- 280 x 270 x 148mm (H x W x D)
- Weight: 4.0kg (4.5kg packed)
- Sound level: 65 dB(A) at 1m
- Rated at: 2.0 kW at 240V
- 31 second drying time
- Supply voltage: 220-240V/1/50Hz
- BEAB Approved
- IP24 Rated
- Cable entry bottom right



Stock Ref

20101440



## Professional E®

Automatic 'no-touch' hand dryer for smaller office washrooms, kitchens and clinics.

- Cover and base: High gloss, fire retardant ABS/polycarbonate alloy
- Motor: 2700rpm external rotor, brushless motor
- Double insulated appliance
- 262 x 261 x 141mm (H x W x D)
- Weight: 3.09kg (3.52kg packed)
- Sound level: 65 dB(A) at 1m
- Rated at: 2.0 kW at 240V
- 31 second drying time
- BEAB Approved
- Supply voltage: 220-240V/1/50Hz
- IP24 Rated
- Cable entry bottom right



Stock Ref

20101402