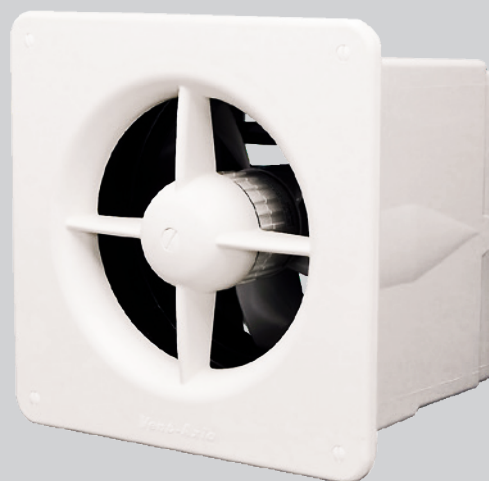


Traditional Standard Wall Fan

- Extract/intake models in 4 sizes: 6", 7", 9" and 12"
- IPX4 Rated
- White fascia, wall sleeve and black external weather louvre
- Optional shutter available
- Manufactured in weather-resistant polymeric materials
- For the best performance from your fan, use an Ecotronic controller



Classic Retro-Styled Ventilation

The proven Standard Range Wall Fans and Fitting Kits are designed to fit flush into most double brick walls using the rigid wall liner supplied. Provision is made within the liner for conduit entry. When installed, only the ivory fascia is visible on the internal wall face. The external weather louvre fits flush to the outside. A shutter is available as an accessory which can be easily fitted within the unit.

On new building work the installation and wiring of the wall liner can be completed prior to the final installation of the unit and controller. Fully shrouded connectors on the fascia automatically connect the wiring to the motor when fitted to the wall liner.

Fan Core Motor

The motor is purpose-designed. Suitable for running at any angle. Quiet running, enclosed, sealed for life ball bearings.

Supply voltage: 220-240V/1/50Hz.

Suitable for operation in ambient temperatures from -40°C to +50°C.

Fitted with Standard Thermal Overload Protection (S.T.O.P.).

Shutter

Type SD/R

The extract/intake shutter fits inside the Vent-Axia unit and closes against unwanted back draughts. It can be fitted at the same time as the unit or at a later date if required. Airflow operated for extract use, cord operated lock for intake use.

Controller

The Ecotronic controller is recommended for use with this model to give full function control of the fan including auto mode using an electromechanical sensor from Vent-Axia's sensor range. Alternatively, single speed extract is achieved using a normal On/Off switch.

Models

Complete Fan

Size	Stock Ref
S6WL	131510
S7WL	132510
S9WL	133510
S12WL	134510

Fan Core (excludes Wall Kit)

Size	Stock Ref
6"	472222
7"	472223
9"	472224
12"	472225

Wall Kit (excludes Fan Core)

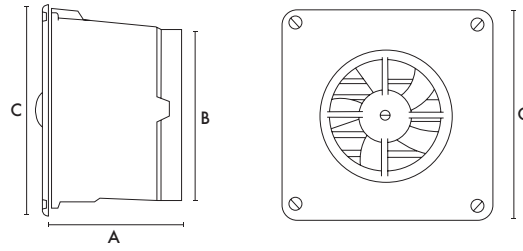
Size	Stock Ref
6"	472274
7"	472275
9"	472276
12"	472277

Accessories

Shutters

Size	Stock Ref
S6SD/R	231710
S7SD/R	232710
S9SD/R	233710
S12SD/R	234710

Fitting Kit Dimensions (mm)



Size	6 in	7 in	9 in	12 in
A	279	279	279	279
B	203	279	279	356
C	279	362	362	448
Fixing hole Ø	235	311	311	400
Weight kg*	4.1	5.7	6.7	10.1

*Fan Core and Fitting Kit combined weight

Performance

Model	Extract Performance m ³ /h (l/s) F.I.D.	Watts MAX.	Sound dB(A) @ 3m	Amps @ 240V
S6WL	340 (94)	32	39	0.16
S7WL	544 (151)	34	35	0.16
S9WL	856 (238)	53	43	0.24
S12WL	1767 (491)	84	46	0.36

Please note that the Standard Range Panel model is not suitable for fitting within an existing Standard Range Wall fitting kit. Please use the correct Standard Range Wall Core assembly.