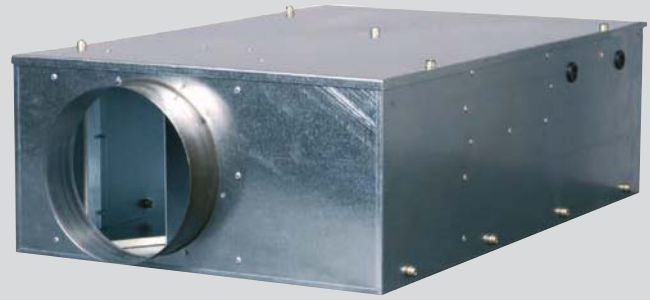


Slimpak (SLPT)

Features & Benefits

- Motor Insulation Class B, protected to IP44
- All units suitable for speed control
- Quality Assurance to BS EN ISO 9001:1994
- Performance tested to BS848 Part 1 1980
- Units suitable as a run & standby extract fan or simultaneously running fan



The Slimpak range of streamline twin fan units, which have been designed to allow the unit to be installed as a Run & Standby extract fan.

Slimpak housings are manufactured from prime quality galvanised sheet steel with circular inlet and outlet spigot connections. To ensure minimum noise levels the units casing is treated with an acoustic lining, Class O rated which offers self extinguishing, zero burn rate, resists ignition and no toxic fume properties.

Each unit incorporates a back draught shutter to prevent air recirculation via the standby fan and to ensure easy access for cleaning and maintenance purposes a full sized access panel is provided to both fans.

Designed and developed to provide one of the most powerful and compact twins in the market, available in three sizes 200, 250 and 315mm dia, with extract performance ranging from 0.116m³/s up to 0.400m³/s (417m³/h to 1,440m³/h), with pressure characteristics of up to 550Pa.

Motors

At the heart of the range is a proven 230V/1/50Hz external rotor motor and backward curved impeller assembly. The assembly is dynamically balanced to ISO 1940. Motors are rated to IP44 according to BS EN 60529. Ball bearings are greased for life and allow the fan to run at any angle. Insulation is Class 'B' (from -15°C to +40°C).

All Acoustic fans are suitable for speed control, an Auto Transformer is recommended to ensure minimum noise levels during speed control so eliminating any possibility of motor harmonic noise.

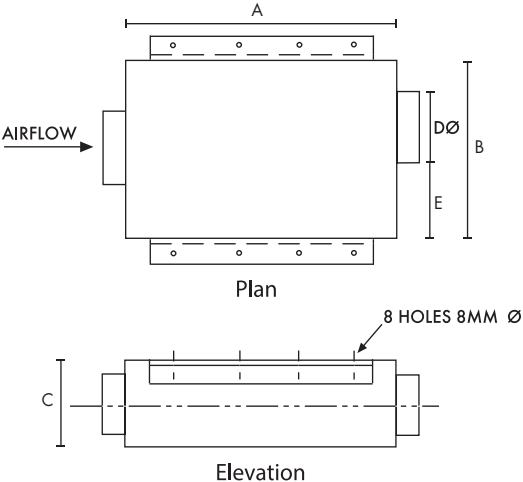
Performance and Sound

Tested to BS 848 Parts 1 & 2. Published dB(A) figures are free field sound pressure levels at 3m with spherical propagation at a reference level of 2 x 10⁻⁵ Pa (20 micro-Pascal). The inlet, outlet and breakout sound power level spectra figures are dB with a reference of 10-12 Watts (1 pico-watt).

Quality Assurance

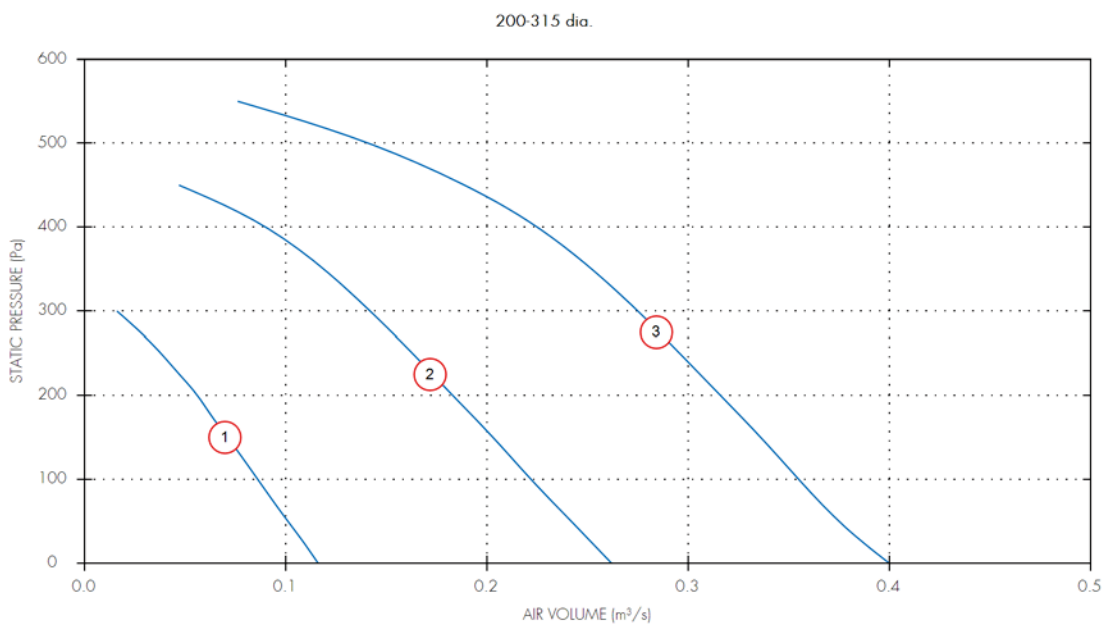
Design and manufacture shall be in accordance with BS EN ISO 9001:1994.

Dimensions (mm)



Unit	A	B	C	DØ	E	Weight
DuctØ						kg
200	760	490	235	200	205	20
250	865	590	285	250	233	32
315	955	650	350	315	240	39

Performance Curves



Performance Guide

Dia.	Motor Phase	Stock Ref	Poles	r.p.m	IP Rating	Curve Ref.	m ³ /s @ Pa					Motor kW	S.C. Amps	F.L.C Amps	dBA @ 3m	
							0	100	200	300	400					500
200	1	SLPT200	2	2450	IP44	1	0.12	0.09	0.06	0.02		0.09	1.44	0.36	31	
250	1	SLPT250	2	2400	IP44	2	0.26	0.22	0.18	0.14	0.09	0.21	3.6	0.9	43	
315	1	SLPT315	2	2550	IP44	3	0.4	0.36	0.32	0.27	0.22	0.14	0.27	4.6	1.15	45

Sound Power Level Spectra dB (ref 10⁻¹² Watts)

Dia.	Motor Phase	Stock Ref	Poles	Spectrum	dB								dBA @ 3m
					63	125	250	500	1k	2k	4k	8k	
200	1	SLPT200	2	Inlet	55	60	61	62	55	51	49	41	41
200	1	SLPT200	2	Outlet	53	59	60	62	61	57	54	43	44
200	1	SLPT200	2	Breakout	52	53	53	52	43	38	34	30	31
250	1	SLPT250	2	Inlet	74	76	75	68	58	57	55	48	50
250	1	SLPT250	2	Outlet	62	72	74	73	72	69	68	59	56
250	1	SLPT250	2	Breakout	61	70	68	63	54	47	43	32	43
315	1	SLPT315	2	Inlet	71	75	74	70	70	66	63	58	54
315	1	SLPT315	2	Outlet	62	70	76	78	72	71	70	63	59
315	1	SLPT315	2	Breakout	61	69	70	64	58	52	46	37	45

Models & Accessories

Fan	ITC Man/Auto Changeover Controller	ITC-DS12/24hr Auto Changeover Controller	RVC ELV Remote Visual Indicator	Auto Transformer
Stock Ref	Stock Ref	Stock Ref	Stock Ref	Stock Ref
SLPT200	10314200	10314210	10314220	10314103
SLPT250	10314200	10314210	10314220	10314103
SLPT315	10314200	10314210	10314220	10314103

Electronic Speed Controller	Auto Transformer & Coil	Starter	Overload	Flexible Connection	Anti-Vibration Mounts (set of 4)
Size Stock Ref	Stock Ref	Stock Ref	Stock Ref	Stock Ref	Stock Ref
200mm W10303102M	10314103	444744	444698	FLX200	68MP033G
250mm W10303102M	10314103	444744	444700	FLX250	68MP033G
315mm W10303102M	10314103	444744	444700	FLX315	68MP033G

Heat Exchange Unit	Backdraught Shutter	Fast Clamp	Worm Drive Clips
Size Stock Ref	Stock Ref	Stock Ref	Stock Ref
200mm	10538290	-	-
	+10577315	10542200	10540200
	+10578315	-	-
250mm	10538290	-	-
	+10577315	10542250	10540250
	+10578315	-	-
315mm	10538290	-	-
	+10577315	10542315	10540315

Pre Filter Cassette	5 Spare Pre Filters	Bag Filter Cassette	Spare Bag Filter Each	3-Way Splitter	Duct Air Heater	
Size Stock Ref	Stock Ref	Stock Ref	Stock Ref	Stock Ref	Stock Ref	
200mm	10532200	10556200A	10533200	10557200	10551250	10531200T1
250mm	10532250	10556250A	10533250	10557250	10551250	10531250T1
315mm	10532315	10556315A	10533315	10557315	10553400	10531315T1

Duct Attenuator					
Size	600mm Stock Ref	900mm Stock Ref	1200mm Stock Ref	Joining Piece Stock Ref	Louvre Shutter Stock Ref
200mm	10535200	10536200	10537200	561808	LS200
250mm	10535250	10536250	10537250	561810	LS250
315mm	10535315	10536315	10537315	561813	LS315