

# HR100S Single Room Heat Recovery Unit



## Features and Benefits

- Single room domestic heat recovery ventilation unit.
- Saves energy - controls condensation.
- 60% heat recovery.
- Extremely quiet trickle ventilation mode.
- Easy to install.
- Rated to **IP44**.

## Heat Recovery Ventilation

HR100S is a two speed surface mounted extract and intake single room heat recovery unit that gives up to 60% heat recovery. The HR100S has an extremely quiet trickle ventilation mode and is easy to install. An optional range of sensors are available.

Two speed performance: Low 30m<sup>3</sup>/h and High 75m<sup>3</sup>/h. Ideal for condensation control of bath and shower rooms, whilst saving the majority of the heat. The unit meets Building Regulation requirements for bathroom use.

## Heat Exchanger

The model comes complete with a highly efficient, polymeric heat exchanger cube. The compact washable cube interleaves outgoing moist warm air with incoming fresh air and allows the heat from one to warm the other without the two air streams mixing. Up to 60% of the heat that could otherwise be lost is transferred to the incoming air, optimizing energy savings. Energy is saved on room heating with no power being used by the cube itself.

Mains voltage units and associated controls must be out of reach of a person using a bath or shower.

## Extension Wall Sleeve

400mm long, 100mm diameter plastic split wall sleeve and joining collar.

**Stock Ref**  
**400748**

## Model

HR100S - Two speed, surface mounted, extract and intake heat recovery ventilation unit for bathrooms and toilets.

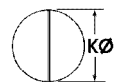
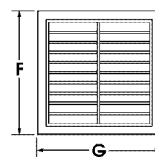
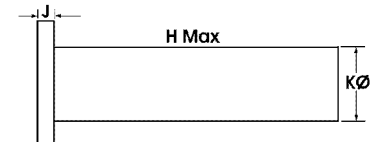
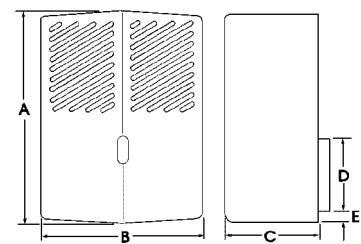
**220-240V/1/50Hz.** Class 1 earthed appliance.

**Stock Ref**  
**14110010**

## Dimensions

| A   | B   | C   | D   | E   |
|-----|-----|-----|-----|-----|
| 317 | 252 | 165 | 107 | 20  |
| F   | G   | H   | J   | K   |
| 140 | 140 | 400 | 15  | 100 |

Weight 5.5kg



Nominal hole through the wall 117mm

## Performance

| Model  | Extract Performance m <sup>3</sup> /h |         | Intake Performance m <sup>3</sup> /h |         | Watts |         | Sound dB(A) @ 3m |         |
|--------|---------------------------------------|---------|--------------------------------------|---------|-------|---------|------------------|---------|
|        | Boost                                 | Trickle | Boost                                | Trickle | Boost | Trickle | Boost            | Trickle |
| HR100S | 75                                    | 30      | 52                                   | 25      | 35    | 14      | 30               | 20      |