

# Fan Box

## In-Line Centrifugal Duct Fans

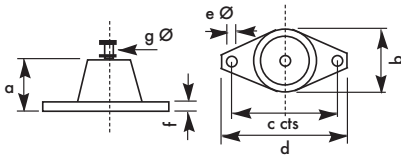


from Vent-Axia

### Features & Benefits

- Air volumes up to 1.08m<sup>3</sup>/s
- Suitable for external pressures up to 400Pa
- Designed to suit duct diameters from 100 to 500mm
- Operating Temperatures up to +40°C
- Speed Controllable
- Quality Assurance to BS EN ISO 9001:1994
- Performance tested to BS848 Part 1 1980

### Anti Vibration Mountings



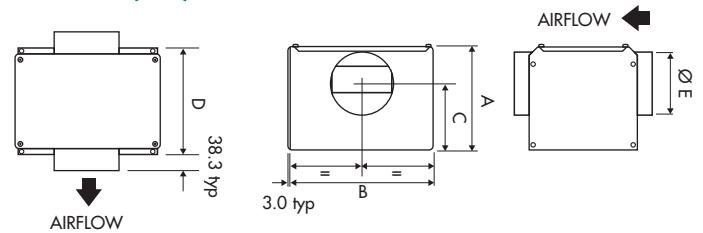
Stock ref	a	b	c	d	e	f	g
68MP033G	27	37	54	67	7	3	M8

### Performance Guide

Fan Stock Ref	RPM	Phase	Duty m <sup>3</sup> /s @ Pa								Motor Amps			
			0	50	100	150	200	250	300	350	400	kW	FLC	SC
FB100	2500	1	0.06	0.06	0.05	0.03						0.08	0.64	0.8
FB125	2500	1	0.07	0.06	0.05	0.04						0.08	0.64	0.8
FB150	1800	1	0.18	0.18	0.16	0.15	0.13	0.11	0.08			0.18	0.79	3.2
FB160	1800	1	0.19	0.18	0.17	0.15	0.13	0.11	0.08			0.18	0.79	3.2
FB200	1450	1	0.25	0.23	0.21	0.19	0.17	0.14	0.11			0.22	0.95	4.0
FB250	1350	1	0.53	0.49	0.44	0.39	0.33	0.26	0.18	0.08		0.60	3.00	12.0
FB315	1400	1	0.90	0.84	0.78	0.70	0.62	0.48	0.35	0.21		1.32	6.20	13.0
FB400	1400	1	0.99	0.94	0.87	0.81	0.72	0.60	0.46	0.29	0.11	1.32	6.20	13.0
FB500	1400	1	1.08	1.02	0.96	0.90	0.83	0.73	0.61	0.34	0.13	1.32	6.20	13.0

FLC = Full Load Current SC = Starting Current

### Dimensions (mm)



Fan Stock Ref	A	B	C	D	ØE	Kg
FB100	268	363	171	272	97	13
FB125	268	363	171	272	122	13
FB150	322	400	203	336	147	13
FB160	322	400	203	336	157	13
FB200	322	400	203	336	197	18
FB250	472	614	320	499	247	23
FB315	530	630	300	560	312	33
FB400	530	630	300	560	397	48
FB500	530	630	300	560	497	72

### Sound Power Level Spectra dB (ref 10<sup>-12</sup> Watts)

Fan Stock Ref	Fan	Mid Octave Bands							dB A @3m	
		63	125	250	500	1k	2k	4k		8k
FB100	Inlet	54	62	46	46	48	47	45	39	33
	Outlet	50	57	55	57	51	50	46	41	37
FB125	Inlet	52	56	53	44	50	46	42	38	33
	Outlet	50	56	55	54	56	47	45	41	38
FB150	Inlet	59	64	54	48	42	39	38	35	32
	Outlet	59	68	62	64	63	64	63	62	50
FB160	Inlet	59	64	54	48	42	39	38	35	32
	Outlet	59	68	62	64	63	64	63	62	50
FB200	Inlet	63	68	55	59	59	57	58	54	44
	Outlet	59	68	67	63	66	64	63	61	50
FB250	Inlet	66	66	62	60	56	55	56	56	43
	Outlet	61	68	62	62	62	60	61	61	48
FB315	Inlet	71	72	66	64	65	65	62	55	50
	Outlet	66	73	68	67	70	69	67	59	54
FB400	Inlet	71	74	69	67	67	68	67	61	53
	Outlet	66	77	71	71	74	71	71	66	58
FB500	Inlet	71	73	65	67	68	68	65	58	53
	Outlet	59	72	68	70	70	69	67	60	55



### Models & Accessories

Fan Stock Ref	Speed Controller					Anti Vibration Mounts Stock Ref
	Electronic Stock Ref	Auto Transfor. Stock Ref	Starter Stock Ref	Overload Stock Ref		
FB100	SP5001	SPM5020	444744	444699	68MP033G	
FB125	SP5001	SPM5020	444744	444699	68MP033G	
FB150	SP5001	SPM5020	444744	444699	68MP033G	
FB160	SP5001	SPM5020	444744	444699	68MP033G	
FB200	SP5001	SPM5020	444744	444700	68MP033G	
FB250	SP5050	SPM5035	444744	444702	68MP033G	
FB315	SP5010	SPM5075	444744	444704	68MP033G	
FB400	SP5010	SPM5075	444744	444704	68MP033G	
FB500	SP5010	SPM5075	444744	444704	68MP033G	

Fan Stock Ref	Electric Heaters Stock Ref	Spare			
		Panel Filters Stock Ref	Panel Filters Stock Ref	Bag Filters Stock Ref	Spare Bag Filters Stock Ref
FB100	-	QPF100	FILTERS100	QPFB100	FILTERQPFB100
FB125	QAH125	QPF125	FILTERS125160	QPFB125	FILTERQPFB125
FB150	QAH150	QPF150	FILTERS125160	QPFB150	-
FB160	QAH160	QPF160	FILTERS125160	QPFB160	FILTERQPFB160
FB200	QAH200	QPF200	FILTERS200	QPFB200	FILTERQPFB200
FB250	QAH250	QPF250	FILTERS250	QPFB250	FILTERQPFB250
FB315	QAH315	QPF315	FILTERS315	QPFB315	FILTERQPFB315
FB400	QAH400	QPF400	FILTERS400	QPFB400	FILTERQPFB400
FB500	-	QPF500	63PF665	QPFB500	63BF665

Fan Stock Ref	In-line Attenuators					Wall Terminal Stock Ref
	300mm Stock Ref	600mm Stock Ref	900mm Stock Ref	1200mm Stock Ref		
FB100	83010030	83010060	83010090	-	SA100/280	
FB125	83012030	83012060	83012090	-	SA125/280	
FB150	83015030	83015060	83015090	-	SA150/280	
FB160	83016030	83016060	83016090	-	SA150/280	
FB200	-	83020060	83020090	83020120	SA200/280	
FB250	-	83025060	83025090	83025120	SA250/280	
FB315	-	83031060	83031090	83031120	SA315/280	
FB400	-	-	83040090	83040120	QSA400/280	
FB500	-	-	83050090	83050120	-	